

# Pool Care Guide and Troubleshooting Tips

## Start of the Season

This easy, 3-day project gets your pool prepped and ready for the upcoming season.

### POOL CARE

Knowing the size of your pool ensures you're using the proper amount of product.

#### MY POOL IS \_\_\_\_\_ GALLONS:

Rectangular: (length x width x average depth) x 7.5

Round: (length x width x average depth) x 5.9

### DAY 1

1. Test the water you will be using to fill your pool to identify what minerals and chemical factors may require attention later.
2. Check that your pool filter is clean. If it is not, use **Filter Rinse**® according to label directions. Soak filter overnight for best results.
3. Begin filling the pool. After the pool is filled with several inches of water, add **Sequa-Sol**® sequestering agent (16-oz/10,000 gallons) to prevent minerals in the water from staining or damaging pool surfaces.
4. As the pool completes filling, add **Clear Blue**® clarifier (4-oz/10,000 gallons) to clear the water of small particles. Fill the pool to the middle of the skimmer or the proper level recommended by the manufacturer. Once filled, start the pump and filtration equipment. Run the pool filter overnight or 24 hours if possible. While the filter is running, vacuum and remove any debris from the pool.

### DAY 2

1. Add **Oxy-Brite**® (1-lb) non-chlorine shock treatment to 10,000 gallons to destroy any contaminants that have accumulated in the water. Test the pH and total alkalinity levels of the pool water with **GLB**® **Four-Way Test Strips** or testing kit. Adjust the total alkalinity level to the range of 80 to 120 ppm (parts per million) with **Alkalinity Up**. Add **pH Up** or **pH Down** to adjust pH levels into the ideal range of 7.2 to 7.8.
2. Now begin disinfecting the water by adding **GLB**® **Chlorine** or **GLB**® **Bromine Sanitizer** to adjust the sanitizer level to the ideal range of 1 to 4 ppm. Allow water to circulate overnight.

### DAY 3

1. Prevent rapid loss of chlorine due to sunlight by adding **GLB**® **Stabilizer** (not applicable to bromine pools).
2. Prevent algae from developing by adding **Algimycin**® 2000 (8-oz/10,000 gallons).

## Easy to Maintain

Follow this 3-day routine to keep your water crystal clear.

### FRIDAY<sup>^</sup>

1. Test the pH, total alkalinity and sanitizer levels of the pool water with **GLB**® **Four-Way Test Strips**. If necessary, adjust levels with **pH Up**, **pH Down**, **Alkalinity Up** and **GLB**® **Granular** or **Brominating Tablets**.
2. Add **Algimycin**® 2000 (8-oz/10,000 gallons).
3. Add **Sequa-Sol**® sequestering agent (4-oz/10,000 gallons) to prevent stains and scale.
4. Add **Natural Clear**® enzyme treatment (8-oz/10,000 gallons) to prevent an oily scum line.
5. Add **Clear Blue**® clarifier (2-oz/10,000 gallons) to add sparkle and remove particles from the water.

### SUNDAY<sup>^</sup>

1. Vacuum pool and clean out the skimmer basket.
2. Wipe off waterline and pool accessories with a soft towel. Use **TLC**® surface cleaner for heavy build-up.
3. Add **Oxy-Brite**® non-chlorine shock oxidizer (1-lb/10,000 gallons) to rid water of contaminants.
4. Check the filter operation. Refer to the filter manufacturer's direction regarding when to backwash or clean the filter. Use **Filter Rinse** each time the sand filter is backwashed.

### WEDNESDAY<sup>^</sup>

1. Test the pH, total alkalinity and sanitizer levels of the pool water with **GLB**® **Four-Way Test Strips**. If necessary, adjust levels with **pH Up**, **pH Down**, **Alkalinity Up** and **GLB**® **Chlorine** or **Bromine Sanitizer**.

<sup>^</sup>We recommend performing these steps on Friday, Sunday and Wednesday, but please choose days that are convenient for you.

## Closing Time

Ensure a smooth setup for next season with these easy steps.

### CLEAN UP

1. Brush pool walls and floor.
2. Vacuum any debris from the pool bottom.

### TREAT THE WATER

1. Add **Oxy-Brite**® non-chlorine shock treatment (1-lb/12,000 gallons) to destroy organic contaminants.
2. Add **Algimycin**® **Winter** (16-oz/12,000 gallons) to prevent algae growth.
3. Add **Sequa-Sol**® sequestering agent (8-oz/12,000 gallons) to protect the pool from staining and scale formation.

### PROTECT YOUR INVESTMENT

1. Clean the filter with **Filter Cleanse** so it is ready to be used in the spring.
2. Lower the water if you are in an area where water must be lowered due to freezing conditions. Drain all water from pipes, pumps, heaters, filters and other pool equipment to prevent damage due to freezing.

If you are in a mild climate where the pool is left full and uncovered, confirm with the manufacturer's directions on whether the filtration system should continue to operate. If the filtration system continues to operate, regularly add **GLB**® **Sanitizer**, **Algimycin**® 2000 and **Sequa-Sol**® sequestering agent.

Scan Here



to shop our full assortment of pool supplies at **LowesProSupply.com/Pool**





## Cloudy, Dull Water

### POSSIBLE PROBLEMS AND SOLUTIONS

#### Dirty filter

Clean filter with Filter Fresh

*Maintenance Tip:* Backwash as necessary and clean filter thoroughly as needed.

#### High pH

Test pH and total alkalinity. Add pH Down as directed.

*Maintenance Tip:* Test frequently and maintain a pH of 7.2 to 7.8 and a total alkalinity level of 80 to 120 ppm.

#### Low free chloride residual

Test for chlorine residual and adjust as needed. Shock oxidize with Oxy-Brite.

*Maintenance Tip:* Maintain free chlorine level of 1 to 3 ppm.

#### Filter not removing small particles

Use Clear Blue to coagulate small particles. Check filter operation.

*Maintenance Tip:* Use Clear Blue (1-oz/5,000 gallons) weekly.

#### Backwashing sand filters too often

Backwash less frequently, only as recommended by the filter manufacturer's directions.

*Maintenance Tip:* Use Filter Rinse once a month.

#### Dissolved metals in water

Use Sequa-Sol to control metals in the water.

*Maintenance Tip:* Use Sequa-Sol (4-oz/10,000 gallons) weekly.



## Yellow Slime

### POSSIBLE PROBLEMS AND SOLUTIONS

#### Mustard algae

Clean filter with Filter Rinse or Filter Fresh. Brush affected areas. Use Algimycin 2000, Algimycin Yellow or Strike Out algaecide. Use Drop n' Vac to help remove dead algae.

*Maintenance Tip:* Use Algimycin 2000 (8-oz/10,000 gallons) weekly.



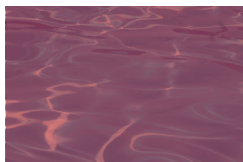
## Cloudy, Green Water

### POSSIBLE PROBLEMS AND SOLUTIONS

#### Green algae

Use Algimycin 2000 or Algimycin 600 to destroy algae. Use Drop n' Vac to help remove dead algae.

*Maintenance Tip:* Use Algimycin 2000 (8-oz/10,000 gallons) weekly. Adjust returns to provide better water flow over affected area.



## Reddish Brown Water

### POSSIBLE PROBLEMS AND SOLUTIONS

#### Iron or manganese dissolved in water

Use Sequa-Sol to suspend and inactivate strain-causing minerals. For extreme cases, use Super Sequa-Sol.

*Maintenance Tip:* Use Sequa-Sol (8-oz/10,000 gallons) weekly.



## Clear or Green Water

### POSSIBLE PROBLEMS AND SOLUTIONS

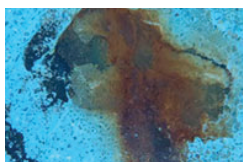
#### Metals in water

Use Stain Magnet to remove stains. Follow with Sequa-Sol.

#### Unbalanced water

Make necessary pH and total alkalinity adjustments.

*Maintenance Tip:* Use Sequa-Sol or Super Sequa-Sol weekly.



## Stains and Rust

### POSSIBLE PROBLEMS AND SOLUTIONS

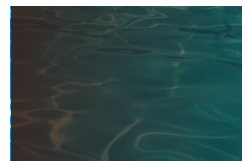
#### Metals in water

Use Stain Magnet to remove stains. Follow with Sequa-Sol.

#### Unbalanced water

Adjust pH and total alkalinity.

*Maintenance Tip:* Maintain pH of 7.2 to 7.8 and total alkalinity of 80 to 120 ppm. Use Sequa-Sol (8-oz/10,000 gallons) weekly.



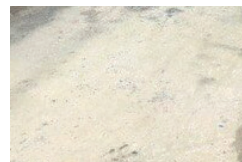
## Brown/Dark Green Spots

### POSSIBLE PROBLEMS AND SOLUTIONS

#### Black algae

Use Algimycin 2000 or Algimycin 600 to destroy algae. Use Drop n' Vac to help remove dead algae.

*Maintenance Tip:* Use Algimycin 2000 (8-oz/10,000 gallons) weekly. Adjust returns to provide better water flow over affected area.



## Calcium Scale Deposits

### POSSIBLE PROBLEMS AND SOLUTIONS

#### Dissolved copper from fill water;

#### corrosion of copper pipes/heater

Use Sequa-Sol or Super Sequa-Sol to dilute pool water with water of lower hardness.

*Maintenance Tip:* Use Sequa-Sol or Super Sequa-Sol weekly.

## Skin and Eye Irritation

### POSSIBLE PROBLEMS AND SOLUTIONS

#### Combined chlorine level is too high

Shock oxidize with Oxy-Brite. Test the free chlorine level and adjust to maintain a residual of 1 to 3 ppm.

*Maintenance Tip:* Maintain disinfectant level of 1 to 3 ppm at all times regardless of pool usage or weather conditions.

#### pH too low or too high

Test pH and correct with pH Up or pH Down.

*Maintenance Tip:* Maintain pH of 7.2 to 7.8 and total alkalinity of 80 to 120 ppm.

## Odors

### POSSIBLE PROBLEMS AND SOLUTIONS

#### Combined chlorine level is too high

Shock oxidize with Oxy-Brite. Test the free chlorine level and adjust to maintain a residual of 1 to 3 ppm.

*Maintenance Tip:* Test chloride level daily. Maintain pH of 7.2 to 7.8, total alkalinity of 80 to 120 ppm and free chlorine of 1 to 3 ppm.

#### Grease and oil from swimmers

Use enzyme-action Natural Clear to dissolve oils and lotions. Clean walls and surfaces with TLC. Clean filter with Filter Cleanse, Filter Fresh or Filter Rinse.

*Maintenance Tip:* Use Oxy-Brite after heavy pool use. Use Natural Clear weekly.